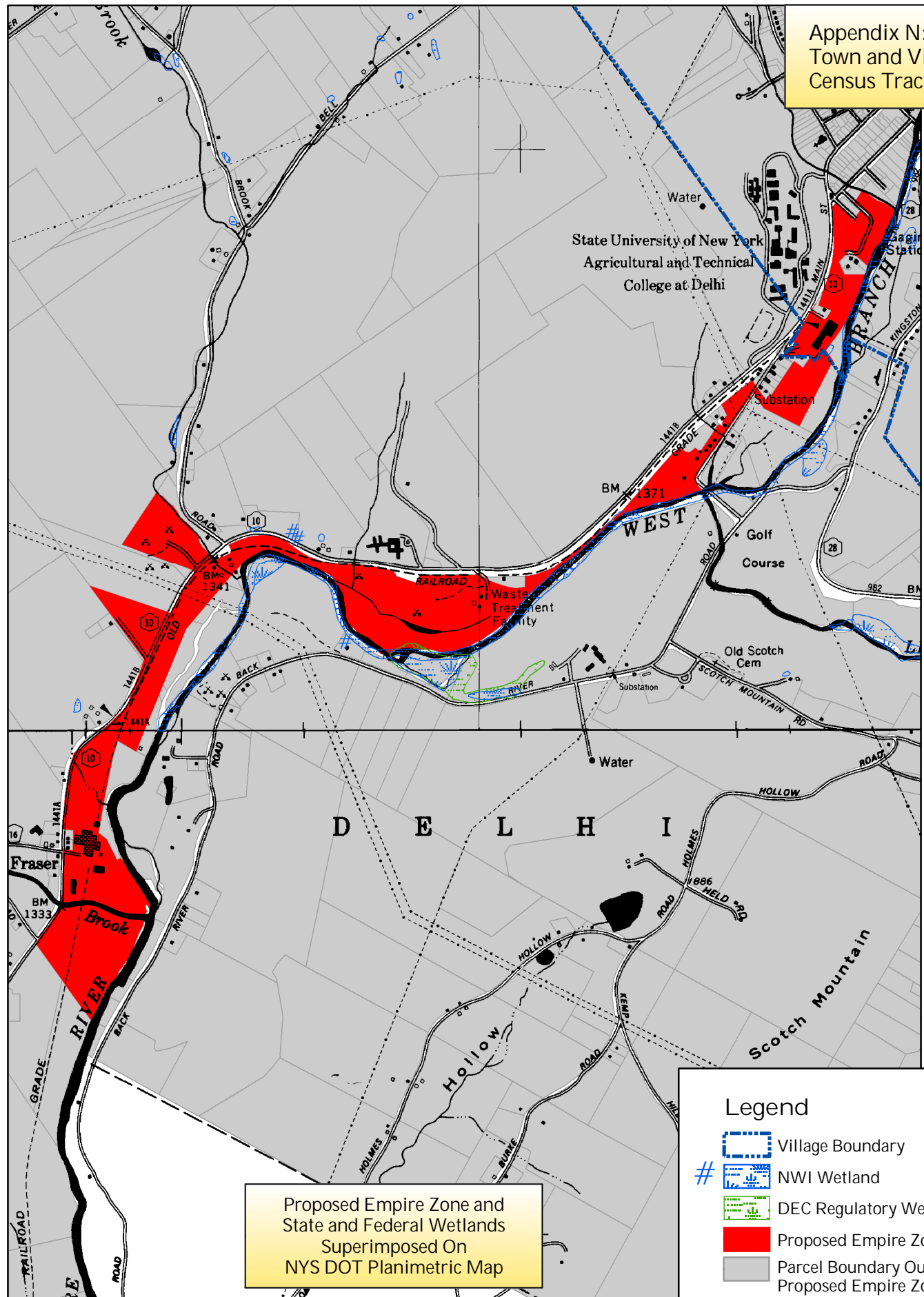
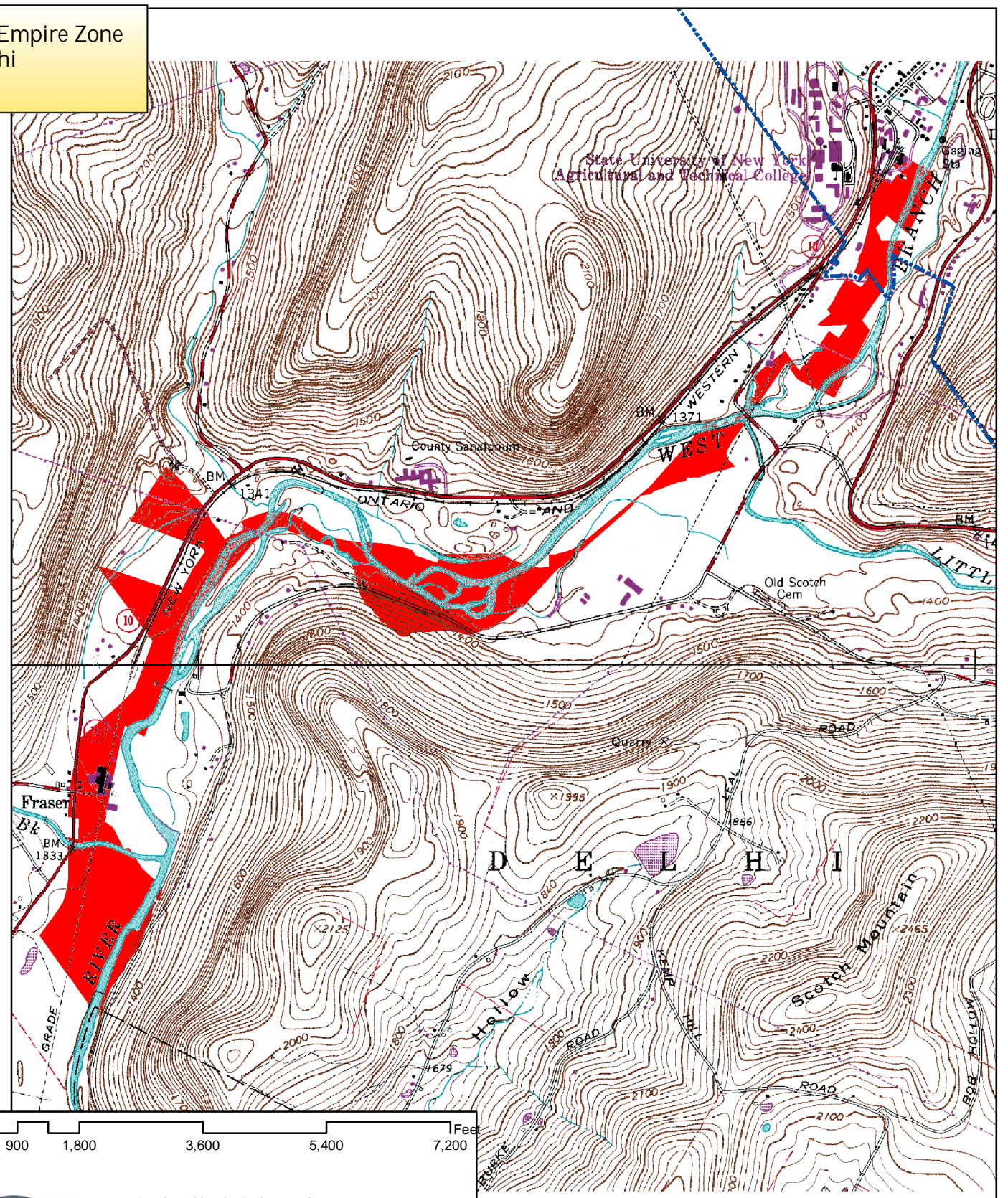


Appendix N: Proposed Empire Zone  
Town and Village of Delhi  
Census Tract 9908



Proposed Empire Zone and State and Federal Wetlands Superimposed On NYS DOT Planimetric Map

||




Proposed Empire Zone Superimposed On USGS Quadrangle Map

**Legend**

- Village Boundary
- NWI Wetland
- DEC Regulatory Wetland
- Proposed Empire Zone
- Parcel Boundary Outside Proposed Empire Zone

0 900 1,800 3,600 5,400 7,200 Feet



Produced by the Delaware County Planning Department GIS. September 2005.  
I:\project\ecodev\2005empirezone

Quadrangle provided by USGS.  
Federal Wetlands provided by the National Wetlands Inventory, US Fish and Wildlife Service.  
DEC Regulatory Wetland provided by NYS DEC.